



Kara

FOODSERVICE BAKERS

BREADS & BAGUETTES

Improved BLOOMERS

If you're looking for a more premium sandwich carrier, look no further than Kara's best selling bloomers. Kara bloomers have been improved for better performance in the kitchen.

- Vegan
- Softer Eat
- Improved Shelf Life
- 3 Extra Slices



White Bloomer

A medium sliced, D-shaped white bloomer with a golden crust and a soft, fluffy texture. Ideal for gourmet sandwiches and for toasting.
Slice Thickness: 14.3mm



Code: **F02388**

Case Size: **6 x 1**

Unit Weight: **800g**

17 slices + 2 crusts



Malted Bloomer

A medium sliced, D-shaped malted bloomer with a golden crust and a soft, fluffy texture. Contains malted wheat flakes and malted barley.
Slice Thickness: 14.3mm



Code: **F02389**

Case Size: **6 x 1**

Unit Weight: **800g**

17 slices + 2 crusts

Suitable for: Vegetarian Vegan

Contains: Nuts Eggs Milk

BAGUETTES



How to bake our baguettes:

- For best results bake from frozen
- Preheat ovens to 200 °C or Gas Mark 6
- Bake for 8 minutes or until golden brown



Mini Baguette

A small French-style baguette finished with two traditional diagonal cuts.

180mm

V VE

Code: **F00288**

Case Size: **40**

Unit Weight: **75g**

Avg. Length: **180mm**

Un sliced



Large White Baguette

Perfect for caterers looking to serve a super-sized breakfast baguette or to cut and present with a sharing platter! Finished with 6 diagonal cuts.

500mm

V VE

Code: **F00296**

Case Size: **20**

Unit Weight: **235g**

Avg. Length: **500mm**

Un sliced



Malted Wheat Petit Pain

Part-baked so can be served soft or slightly crispy. Serve warm alongside soups and starters.

110mm

V VE

Code: **F00289**

Case Size: **70**

Unit Weight: **55g**

Avg. Length: **110mm**

Un sliced



Small Petit Pain

A white petit pain, finished with traditional straight cut, part-baked for convenience and can be served soft or crispy.

90mm

V VE

Code: **F00290**

Case Size: **100**

Unit Weight: **37g**

Avg. Length: **90mm**

Un sliced



White Half Baguette

A great option for lunchtime menus. Perfect for a wide selection of meat, fish or veggie fillings.

275mm

V VE

Code: **F00442**

Case Size: **40**

Unit Weight: **130g+/-5g**

Avg. Length: **275mm**

Un sliced



White Petit Pain

This French-style white petit pain has a traditional straight surface burst cut. Thaw, cook and serve!

110mm

V VE

Code: **F00291**

Case Size: **70**

Unit Weight: **54g**

Avg. Length: **110mm**

Un sliced



Panini Baguette

A part baked white Panini. Great for making delicious toasted sandwiches.

260mm

Code: **F00753**

Case Size: **40**

Unit Weight: **125g**

Avg. Length: **260mm**

Un sliced



Mini Baguette

French-style white mini baguette with two traditional diagonal bursts on top. Simply thaw and serve!

180mm



Code: **F00292**

Case Size: **40**

Unit Weight: **75g**

Avg. Length: **180mm**

Unsliced



White Petit Pain

Great for serving with soup or as part of a bread basket. A traditional white petit pain with straight surface cut.

110mm



Code: **F00293**

Case Size: **70**

Unit Weight: **51g**

Avg. Length: **110mm**

Unsliced



White Sandwich Baguette

Perfect for a lunchtime menu offer, this white sandwich baguette is finished with three traditional diagonal cuts.

275mm



Code: **F00439**

Case Size: **40**

Unit Weight: **125g**

Avg. Length: **275mm**

Unsliced



Malted Wheat Half Baguette

A great thaw and serve option with a distinct malty taste, soft crumb and golden crust.

275mm



Code: **F00441**

Case Size: **40**

Unit Weight: **130g**

Avg. Length: **275mm**

Unsliced

ENGLISH MUFFIN

The perfect all-day breakfast carrier, our English Muffin is available unsliced to offer flexibility.

Did you know?
Toasted Muffins are the most popular savoury bakery breakfast item.*



Unsliced English Muffin

Finished with a coating of semolina, this unsliced version allows flexibility in the kitchen. Perfect for an all-day breakfast option.



Code: **F00976**

Case Size: **8 x 6**

Unit Weight: **72g**

Unsliced

FLOURED BAPS

... MK5
Floured Bap

... Premium
Floured Bap

... MK4
Floured Bap

Did you know?

The Floured Bap was Kara's first product launch in 1985.



School
Bestseller

MK5 Floured Bap

Our 5 inch (MK5) floured bap is finished with a flour dusting, making it ideal for sandwich menus.

Premium Floured Bap

A 5 inch soft white floured bap topped with flour and two water splits. Perfect for burger day as this bun is less sweet than a brioche.

MK4 Floured Bap

Our best selling 4 inch (MK4) soft white floured bap is dusted with flour making it excellent for hot breakfast options or classic sandwich options.

Code: F00270	Unit Weight: 86g
Case size: 6 x 8	Sliced

Code: F01557	Unit Weight: 92g
Case size: 6 x 8	Sliced

Code: F00266	Unit Weight: 50g
Case size: 4 x 12	Sliced

KARA SANDWICH FACTS

We spend **£8bn** on sandwiches each year in the UK*

Sandwiches are seeing growth this year due to consumer shifting to lower ticket meal solutions as a more affordable eating out experience. Kara has a sandwich carrier for every menu.

Serve on our Floured Baps



We purchase **£3bn** sandwiches each year*



Did you know...

More sandwich carriers are purchased through a coffee shop/café than any other channel.

UK's Top 3 Fillings*

3

Egg

2

Breakfast

1

Chicken

*Source: British Sandwich Association

DELI ROLLS & SUBS

When looking for alternative sandwich carriers, our range of deli and sandwich rolls offers a great choice and visible appeal.



Wholemeal Hoagies

An earthy mix of wholemeal flour and a coating of malted wheat grains is a delicious choice with hand-carved ham or vintage cheese.

Code: F00359

Case Size: 9 x 6

Unit Weight: 98g

Un sliced

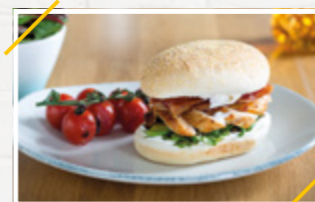


TOP 5 ITEMS purchased at lunch



10% of sandwiches are sold in **SCHOOLS***
Have the **PERFECT CARRIER** with Kara's Delis

SANDWICH SPECIALS & BAKERS BASKET



Maize Topped Oval Buns

This versatile sliced oval shaped white bread bun has a maize grit topping making it ideal for both hot and cold fillings.

Code: **F00492**

Case Size: **14 x 4**

Unit Weight: **65g**

Sliced



Improved

MK4 High Fibre Bun

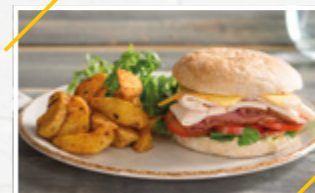
A soft white bread bun with added wheat fibre and wheat bran and contains the same fibre as a brown bun! Ideal for the education sector.

Code: **F02317**

Case Size: **4 x 12**

Unit Weight: **50g**

Sliced



MK5 Malted Grain Bap

This golden brown soft bap has a distinct taste thanks to the malted wheat flakes and malted barley. Excellent for a wide selection of hot and cold fillings.

Code: **F00375**

Case Size: **6 x 8**

Unit Weight: **95g**

Sliced



Bakers Basket

A selection of three dinner rolls (a white, seeded and wholemeal) that are great to serve with starters or as part of a side dish.

Code: **F04295**

Case Size: **9 x 6**

Unit Weight: **54g**

Un sliced



Mighty Floured Bap

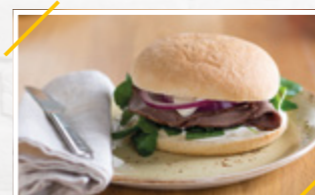
A big 6 inch floured bap that makes for the ultimate carrier for any builders breakfast. Serve yours fully stacked and paired with an Americano.

Code: **F00402**

Case Size: **6 x 4**

Case Weight: **115g**

Sliced



MK5 Plain Sandwich Bap

A large soft white sandwich bap. Excellent for hot and cold fillings.

Code: **F00373**

Case Size: **6 x 8**

Unit Weight: **86g**

Sliced



Suitable for: Vegetarian Vegan

Contains: Nuts Eggs Milk

SLICED BREAD



Medium White Bread

This medium sliced soft white loaf is ideal for toast or sandwiches. Works well for a toasted sandwich.

Code: **F00380**

Case Size: **8 x 1**

Unit Weight: **800g**

21 slices + 2 crusts



Thick White Bread

A golden baked white thick sliced white loaf. Served with hearty fillings like ham or vintage cheeses.

Code: **F00381**

Case Size: **8 x 1**

Unit Weight: **800g**

15 slices + 2 crusts



Thick Half & Half Bread

This thick sliced sandwich bread is made with half wholegrain and half white flour. A nutritious sandwich option, especially for the education sector.

Code: **F01504**

Case Size: **8 x 1**

Unit Weight: **750g**

18 slices + 2 crusts



Medium Wholemeal Bread

Great for a multitude of sandwich fillings and for sandwiches on the go.

Code: **F00382**

Case Size: **8 x 1**

Unit Weight: **800g**

21 slices + 2 crusts



Thick Wholemeal Bread

Delicious as a sandwich carrier for food-to-go menus or to serve with afternoon tea.

Code: **F00383**

Case Size: **8 x 1**

Unit Weight: **800g**

15 slices + 2 crusts



Medium Wholemeal Sandwich Bread

As a brown baked medium sliced sandwich wholemeal loaf, this is a perfect option for an afternoon tea menu.

Code: **F01284**

Case Size: **8 x 1**

Unit Weight: **800g**

24 slices + 2 crusts



Thick Wholemeal Sandwich Bread

Great for open and closed sandwiches and as a thick sliced loaf, it's also great for toasting.

Code: **F01273**

Case Size: **8 x 1**

Unit Weight: **800g**

18 slices + 2 crusts



Extra Thick Wholemeal Sandwich Bread

A breakfast menu must-have, this extra thick sliced loaf is ideal for toasting and topped with a selection of jams and marmalades.

Code: **F01274**

Case Size: **8 x 1**

Unit Weight: **800g**

16 slices + 2 crusts



Medium White Sandwich Bread

An absolute classic. This square sandwich loaf makes perfect sandwiches to-go.

Code: **F01285**

Case Size: **8 x 1**

Unit Weight: **800g**

24 slices + 2 crusts



Thick White Sandwich Bread

Serve alongside a full English or use to make tasty cheese toasties.

Code: **F01271**

Case Size: **8 x 1**

Unit Weight: **800g**

18 slices + 2 crusts



Extra Thick White Sandwich Bread

Golden baked and deliciously soft. A square loaf perfect for toast.

Code: **F01272**

Case Size: **8 x 1**

Unit Weight: **800g**

16 slices + 2 crusts





*Data collected from Lumina Intelligence 2022

For more information on Kara products please contact:
karafs.co.uk 0161 351 2399

Data correct as of September 2022 - please note some products may not be available due to industry demand. See our website for product information.

f t @ in karafsbakery